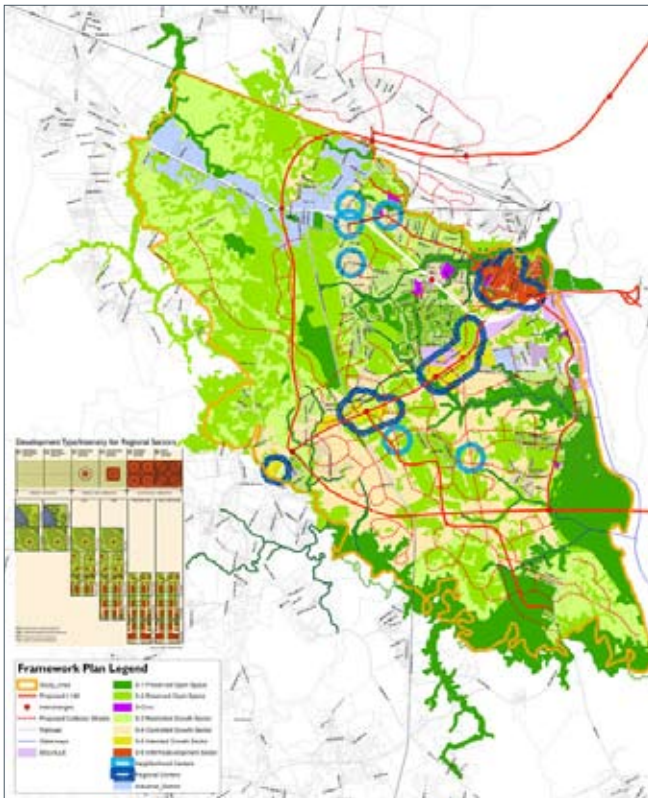




# Mountain Landscapes Initiative: Western North Carolina Toolbox Consultant Team Profile

## ABOUT THE LAWRENCE GROUP

The Lawrence Group's Town Planning practice was founded on the philosophy of providing our clients with the expertise to create sustainable communities through smart design.



Transect-based Conservation and Settlement Plan, Leland, North Carolina

“[The Lawrence Group] offer the kind of wisdom that comes with helping communities define what they are and then establish a blueprint to become better. They offer the kind of hope that comes with good planning and design, created from a sound ethical base.”

Marguerite Williams, President Davidson Housing Coalition, Davidson, NC

## DEDICATION TO SMART GROWTH PRINCIPLES

Our commitment to implementing smart growth is embodied in the signatures of both Craig Lewis and David Walters on the 1996 Charter for the New Urbanism. Long before Smart Growth became the common terminology, Craig and David were practicing it. In 1995, they were featured in Southern Living Magazine in the article “Saving the Countryside.” In 2004, David co-authored the book, Design First: Design-based Planning for Communities. Recently, David authored and Craig contributed to a new book entitled Designing Communities: Charrettes, Master Plans, and Form-Based Codes (2007).



Downtown Redevelopment Vision, Wendell, North Carolina

“The Town has received nothing but accolades for the overall process and I personally attribute this to the high quality and professionalism and The Lawrence Group’s ability to manage a successful public process.”

Karen Floyd, Planning Director, Town of Cornelius, NC

## TOWN PLANNING STUDIO

The Lawrence Group's Town Planning studio, based in Davidson, NC, is dedicated to the needs of public, private, and non-profit clients that seek to strengthen their communities through sustainable planning and thoughtful building design embodied in the principles of Smart Growth and New Urbanism. Its primary focus is to provide architectural and town planning services with an emphasis on traditional neighborhood design and smart growth planning principles, including: form-based codes; neighborhood planning and design; downtown master plans; and regional, small area, and community-wide plans.

## SMART GROWTH IMPLEMENTATION STRATEGIES

Our smart growth implementation credentials include Form-Based Codes; Traditional Neighborhood Design; Conservation Neighborhood Design; Adequate Public Facilities Ordinances; Capital Improvement Programming; Open Space and Environmental Protection; Inclusionary Zoning for Affordable Housing; Historic Preservation; Watershed, Viewshed, and Slope Protection; Access Management; Transit-Oriented Development; Pedestrian and Bicycle Policy and Infrastructure; Low Impact Design; and Design Guidelines.

## FIRM PROFILE (WWW.THELAWRENCEGROUP.COM)

THE LAWRENCE GROUP INC. was founded in 1983 in St. Louis, Missouri, and now operates offices in St. Louis, New York City, Davidson, Austin, Denver, and Beijing. Our network of international offices enables us to serve clients throughout the world in the fields of architecture, interior design, town planning, landscape architecture, and graphic design.

**LAWRENCE GROUP TEAM MEMBERS, DAVIDSON, NC** (thelawrencegroup.com)



**Craig Lewis,**  
AICP, LEED AP  
DIRECTOR OF TOWN  
PLANNING



**David Walters,**  
RIBA, CNU  
SENIOR PLANNER



**Dave Malushizky,**  
AIA, LEED AP  
PRINCIPAL/  
ILLUSTRATOR



**John Cock,**  
AICP  
ASSOCIATE  
PLANNER



**Tom Harrington,**  
RLA  
SENIOR LANDSCAPE  
ARCHITECT



**Chad Hall**  
DESIGNER



**Megan Duskocil**  
PLANNER



**Amanda Huggins**  
DESIGNER

## Key LG Carolinas Projects

- Boone Smart Growth Audit
- Research Triangle Growth Study and General Development Guidelines
- Spartanburg, SC Area Active Living Assessment
- Troutman, NC Town & Country Plan
- Leland, NC Master Plan
- Wendell, NC Town Plan & UDO
- O'Neal Village Pattern Book, Greer, SC
- Hendersonville Southside Development Initiative
- Town of Fletcher - Land Development Code
- Brevard Unified Development Ordinance
- City of Raleigh Urban Design Guidelines
- Pavement Audit for the Saluda-Reedy Watershed, SC



Master Plan  
Pineville, North Carolina



Cluster development concept  
Troutman, NC

## KUBILINS TRANSPORTATION GROUP



**Wade Walker,**  
PE, CNU  
PRINCIPAL &  
TRANSPORTATION  
PLANNER  
CHARLOTTE, NC

Kubilins Transportation Group provides traffic engineering and transportation planning services for public and private organizations. Our strong belief in the intrinsic relationships between transportation decisions and the context surrounding them has led to much success in providing workable, holistically consistent transportation solutions for projects throughout the country.

## 180° DESIGN STUDIO



**Kevin Klinkenberg,**  
AIA, CNU  
PRINCIPAL  
KANSAS CITY, MO

180 Degree Design Studio focuses on designing successful and sustainable mixed-use projects. The services we offer run the gamut from master planning and building design through the writing of form-based zoning codes and design guidelines. The firm has received extensive notoriety for its expertise in the field, as well as the techniques employed working with the public.

## CIVITECH, INC.



**Tony M. Sease,**  
PE, CNU  
PRESIDENT  
DURHAM, NC

Civitech, Inc. is an urban design firm specifically formed to provide engineering and consulting services. Areas of Specialization: Interdisciplinary New Urbanist Town Planning and Engineering; Mixed-Use Architecture and Urban Design; Engineering Site Design of Pedestrian-Scaled Street Environments; Sustainable Urban Design and Community Planning.

## NEW URBAN WATER WORKS



**Milt Rhodes,**  
AICP, CNU  
PRESIDENT  
RALEIGH, NC

New Urban Water Works' focus on making sustainable environments requires mitigating the harmful effects of rainwater runoff on local water resources. Considering the intrinsic benefits of rainwater during planning — as both a natural resource and as an important visual element — leads to using water in a way that is functional and ornamental.